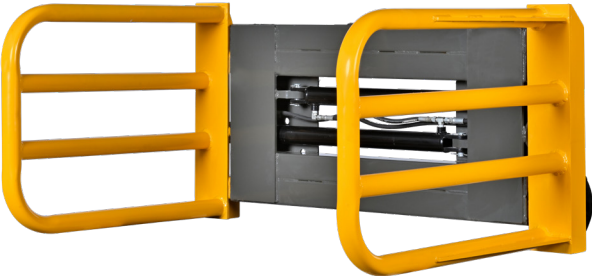


# Square Bale Hugger

For use with wet or dry bales.



- Handles 4 1/2' - 8 1/2' bales
- Rounded corners won't puncture bale
- Rugged four-pipe construction
- Dual cylinder so bale won't slide
- 30" high x 40" long arms

Our bale handling equipment is manufactured with universal mounts which fit most Bobcat, John Deere, Gehl, New Holland and Case skid loaders. We also manufacture attachments for many other skid loaders and tractor loaders. Non-universal attachments are available for an additional cost.



Notes: \_\_\_\_\_  
\_\_\_\_\_  
\_\_\_\_\_  
\_\_\_\_\_  
\_\_\_\_\_

**Please contact Mast or your local dealer with questions and pricing information.**



Find your local  
Mast Farm Service  
Dealer

